

TECTROL'S 15,000 PSIG choke is manufactured to the same high standards as our 7,800 PSIG chokes. We once more adhere to the American Petroleum Institute Specification. Each choke is tested to one and one half (1½) times working pressure or 22,500 PSIG.

Our choke can be furnished to meet NACE MR-01-75 if necessary. Our 15,000 PSIG chokes are furnished with Tungsten Carbide stems and seats, Stainless Steel material is available on request.

TECTROL'S chokes can be used for many different applications: Well Head chokes, Choke Manifold, Line Heaters, etc., etc

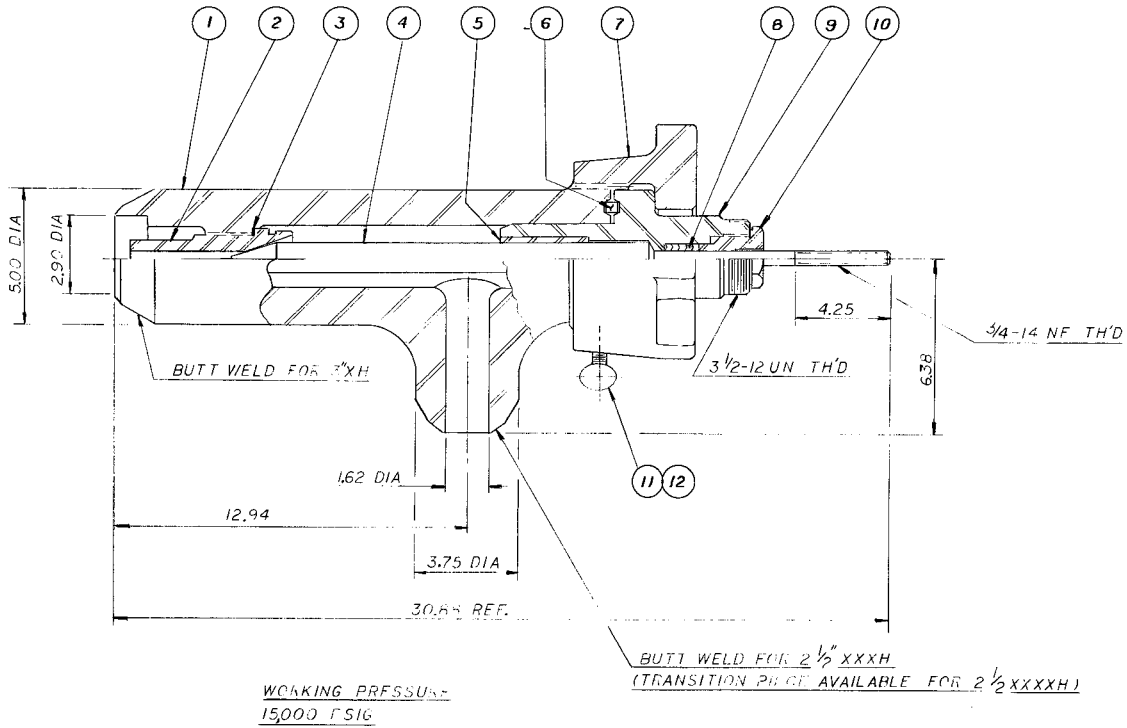
We welcome special order and custom built chokes.

TECTROL ... the "professionals" in choke manufacturing.

CAUTION: WHEN REPLACING THE SEAT AND STEM, YOU SHOULD INSURE YOURSELF THAT ALL PRESSURE, BOTH UP AND DOWN STREAM OF THE CHOKE HAS HAD TOTAL PRESSURE REMOVED. ONLY THEN SHOULD YOU REMOVE THE YOKE. EXTRA CAUTION SHOULD BE TAKEN IF THE CHOKE IS BEING USED IN A HAZARDOUS ENVIRONMENT (H₂S or CO₂), ETC.



LONG NOSE CHOKE
15,000 PSIG
MODEL 150-LA BW



Item	Qty.	Description	Part No.
1	1	Choke Body	0002-00219
2	1	Seat	See Chart
3	1	Gasket	0001-00138
4	1	Stem	See Chart
5	1	Bearing	0001-00163
6	1	Seal Ring BX - 153-SS	0002-00218
7	1	Hammer Nut	0002-00325
8	1	Packing Set	0002-00305
9	1	Actuator Yoke Size 70	0002-00315
10	1	Packing Gland	0002-00320
11	1	Thumb Screw	0001-00149
12	1	Stem Lock	0001-00147

Trim Size	Tapered Seat Stock Number		Stem
	Stainless Steel	Tungsten Carbide	
1"	0001-00523	- - - - -	0002-00309
1"	- - - - -	0001-00524	0002-00310
3/4"	0001-00525	- - - - -	0002-00309
3/4"	- - - - -	0001-00526	0002-00310
1/2"	0001-00527	- - - - -	0002-00309
1/2"	- - - - -	0001-00528	0002-00310