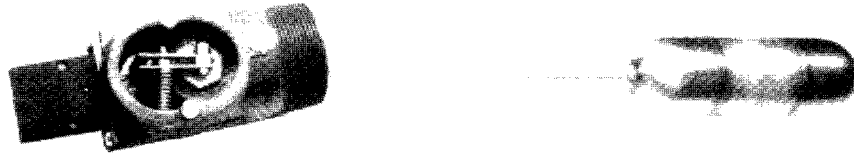


Tectrol, Inc.
P.O. Box 11357
Odessa, TX 79760
432/333-9544

TECTROL®

**LIQUID LEVEL CONTROL
2" THREADED 250 PSIG
MODEL 2-LLC-N**



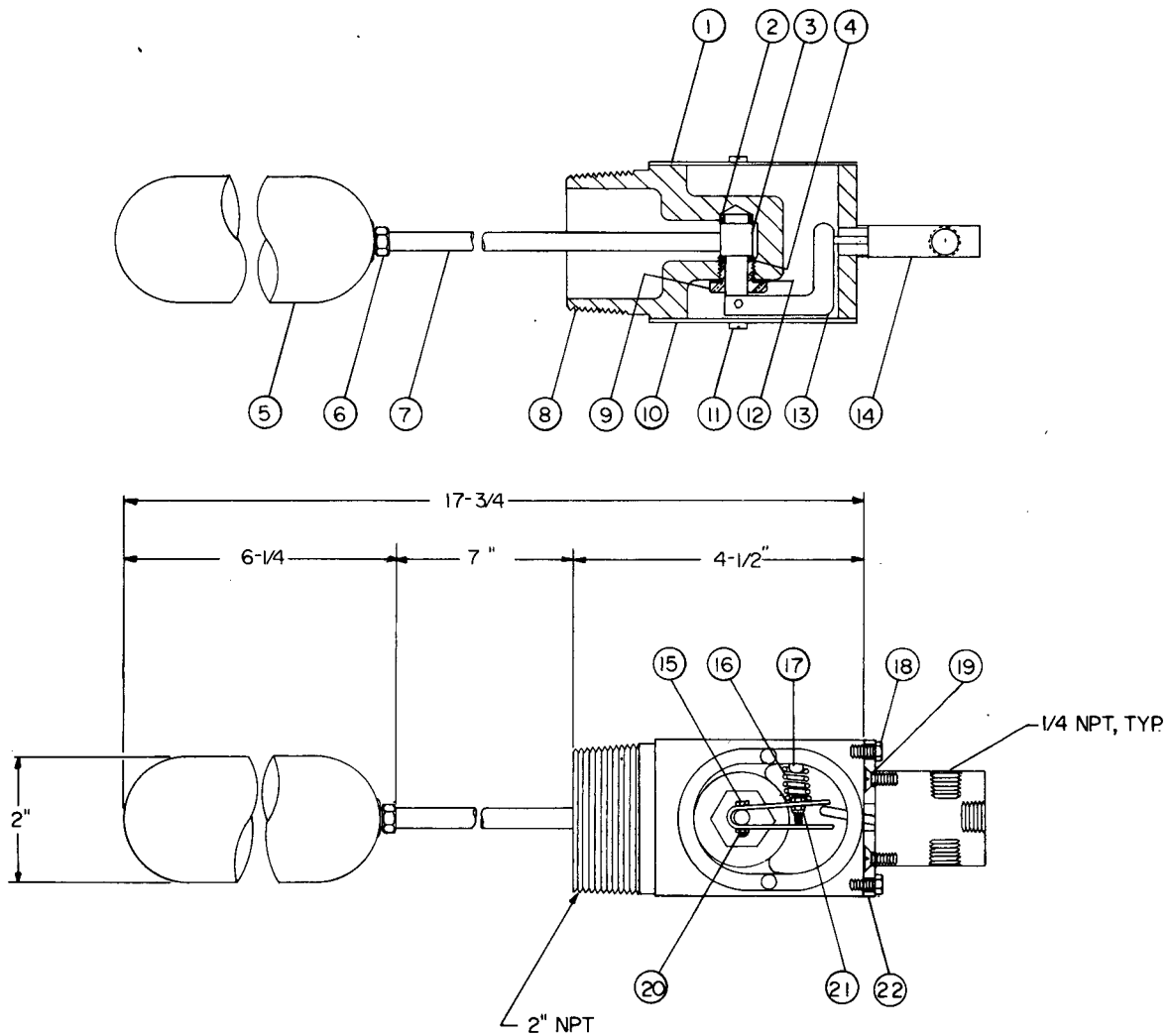
TECTROL'S low pressure float operated 2" liquid level control has found many different applications in the oil industry. Our standard 2" unit utilizes a stainless steel float and "SNAPVALVE" to provide a positive pneumatic output to control your liquid levels. It can be used as a level control or as a component of high-low level alarm system. A major feature of TECTROL's unit is the field adjustment ease that will not effect your processing.

A simple and effective tool for your fluid control, it is available in our standard 2" threaded unit or you may special order a 2" Flanged Unit or 1 1/2" threaded liquid level control.

Special orders on Liquid Level Controls are welcomed.

CAUTION: WHEN REMOVING THE LIQUID LEVEL CONTROL FROM THE VESSEL, MAKE SURE ALL PRESURE IS OFF THE VESSEL, SUPPLY GAS IS OFF AND DISCONNECTED, AND UNIT IS DRAINED OF FLUID. YOU SHOULD INSURE THAT THE VENTED GAS IS PIPED AWAY FROM THE CONTROLLER WHERE IT WILL NOT EFFECT PERSONNEL OR THE ENVIRONMENT. USE CAUTION IF THIS PRODUCT IS BEING USED IN A HAZARDOUS MATERIAL ENVIRONMENT (H₂S OR CO₂), ETC.

**LIQUID LEVEL CONTROL
2" PNEUMATIC 250 PSIG
MODEL 2-LLC-N**



| Item | Qty. | Description | Part No. |
|------|------|-----------------------|----------|
| 1 | 1 | Nameplate | 816 |
| 2 | 1 | Brass Sleeve | 817 |
| 3 | 1 | Trunnion | 818 |
| 4 | 1 | O Ring | 819 |
| 5 | 1 | Float 2 x 6 | 820 |
| | 1 | Float 3 1/2 x 6 | 821 |
| 6 | 1 | Jam Nut | 1026 |
| 7 | 1 | Float Arm | 715 |
| 8 | 1 | Body 2" NPT-Pneumatic | 822 |
| | 1 | Body 2" NPT-Electric | 823 |
| | 1 | Body 1" NPT-Pneumatic | 824 |
| | 1 | Body 1" NPT-Electric | 825 |
| 9 | 1 | Bushing | 826 |
| 10 | 1 | Cover Plate | 827 |

| Item | Qty. | Description | Part No. |
|------|------|-----------------|----------|
| 11 | 4 | Cover Screw | 828 |
| 12 | 1 | O Ring | 829 |
| 13 | 1 | Actuator | 830 |
| 14 | 1 | SnapValve | 6005 |
| | 1 | Electric Switch | 831 |
| 15 | 2 | Screw | 832 |
| 16 | 1 | Spring | 833 |
| 17 | 1 | Spring Keeper | 834 |
| 18 | 2 | Screw | 835 |
| 19 | 2 | Screw | 836 |
| 20 | 1 | Jam Nut | 837 |
| 21 | 1 | Lock Nut | 838 |
| 22 | 1 | Cover Plate | 839 |