

TECTROL'S 15,000 PSIG choke is manufactured to the same high standards as our 7,800 PSIG chokes. We once more adhere to the American Petroleum Institute Specification. Each choke is tested to one and one half (1½) times working pressure or 22,500 PSIG.

Our high pressure chokes are available in the standard configuration of Flange inlet by Socket Weld outlet. However, Flange by Flange, Flange by Union, or Flange by Butt Weld are available upon request. Our choke can be furnished to meet NACE MR-01-75 if necessary. Our 15,000 PSIG chokes are furnished with Stainless Steel stems and seats, Tungsten Carbide material is available on request. TECTROL high pressure chokes are available in both manual and diaphragm operated configurations.

TECTROL'S chokes can be used for many different applications: Well Head chokes, Choke Manifold, Line Heaters, etc., etc . . . . .

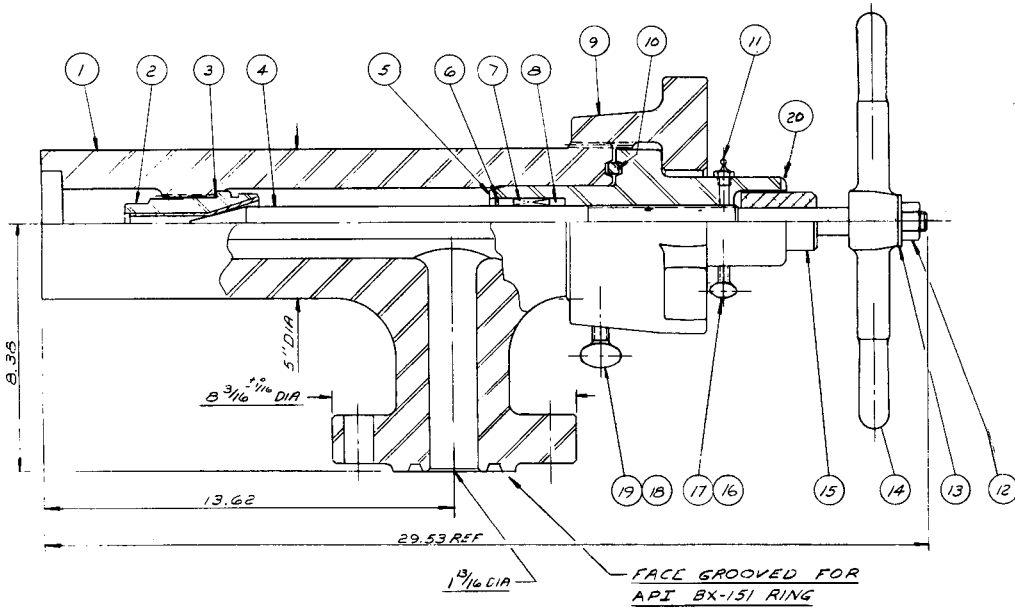
*We welcome special order and custom built chokes.*

*TECTROL ... the "professionals" in choke manufacturing.*

**CAUTION: WHEN REPLACING THE SEAT AND STEM, YOU SHOULD INSURE YOURSELF THAT ALL PRESSURE, BOTH UP AND DOWN STREAM OF THE CHOKE HAS HAD TOTAL PRESSURE REMOVED. ONLY THEN SHOULD YOU REMOVE THE YOKE. EXTRA CAUTION SHOULD BE TAKEN IF THE CHOKE IS BEING USED IN A HAZARDOUS ENVIRONMENT (H<sub>2</sub>S or CO<sub>2</sub>), ETC.**



**LONG NOSE CHOKE**  
**15,000 PSIG**  
**MODEL 150-L**



Item	Qty.	Description	Part No.
1	1	Choke Body	See Chart
2	1	Seat	See Chart
3	1	Gasket	0001-00138
4	1	Stem	See Chart
5	1	Yoke	0002-00204
6	1	Retaining Ring	0001-00145
7	1	Packing Set	0001-00140
8	2	Bearing - Stem	0001-00143
9	1	Hammer Nut	0002-00209
10	1	Seal Ring BX-153	0002-00211

Item	Qty.	Description	Part No.
11	1	Grease Fitting	0002-00213
12	1	Hex Nut	0001-00161
13	1	Flat Washer	0001-00159
14	1	Handle	0001-00157
15	1	Indicator	See Chart
16	1	Thumb Screw	0002-00215
17	1	Stem Lock	0002-00217
18	1	Thumb Screw	0001-00149
19	1	Stem Lock	0001-00147
20	2	Set Screw	0001-00155

STOCK NUMBER	MAXIMUM WORKING PRESSURE	TRIM SIZE	INDICATOR DIAL	TAPERED SEAT STOCK NUMBER		STEM
				Stainless Steel	Tungsten Carbide	
0002-00015 Socket Connection	15,000 psi	1	0001-00151	0001-00523	----	0001-00116
0002-00016 Socket Connection	15,000 psi	1	0001-00151	----	0001-00524	0001-00117
0002-00017 Socket Connection	15,000 psi	3/4	0001-00152	0001-00525	----	0001-00116
0002-00018 Socket Connection	15,000 psi	3/4	0001-00152	----	0001-00526	0001-00117
0002-00019 Socket Connection	15,000 psi	1/2	0001-00153	0001-00527	----	0001-00116
0002-00020 Socket Connection	15,000 psi	1/2	0001-00153	----	0001-00527	0001-00117

Indicator dial must coincide with stem and seat size.