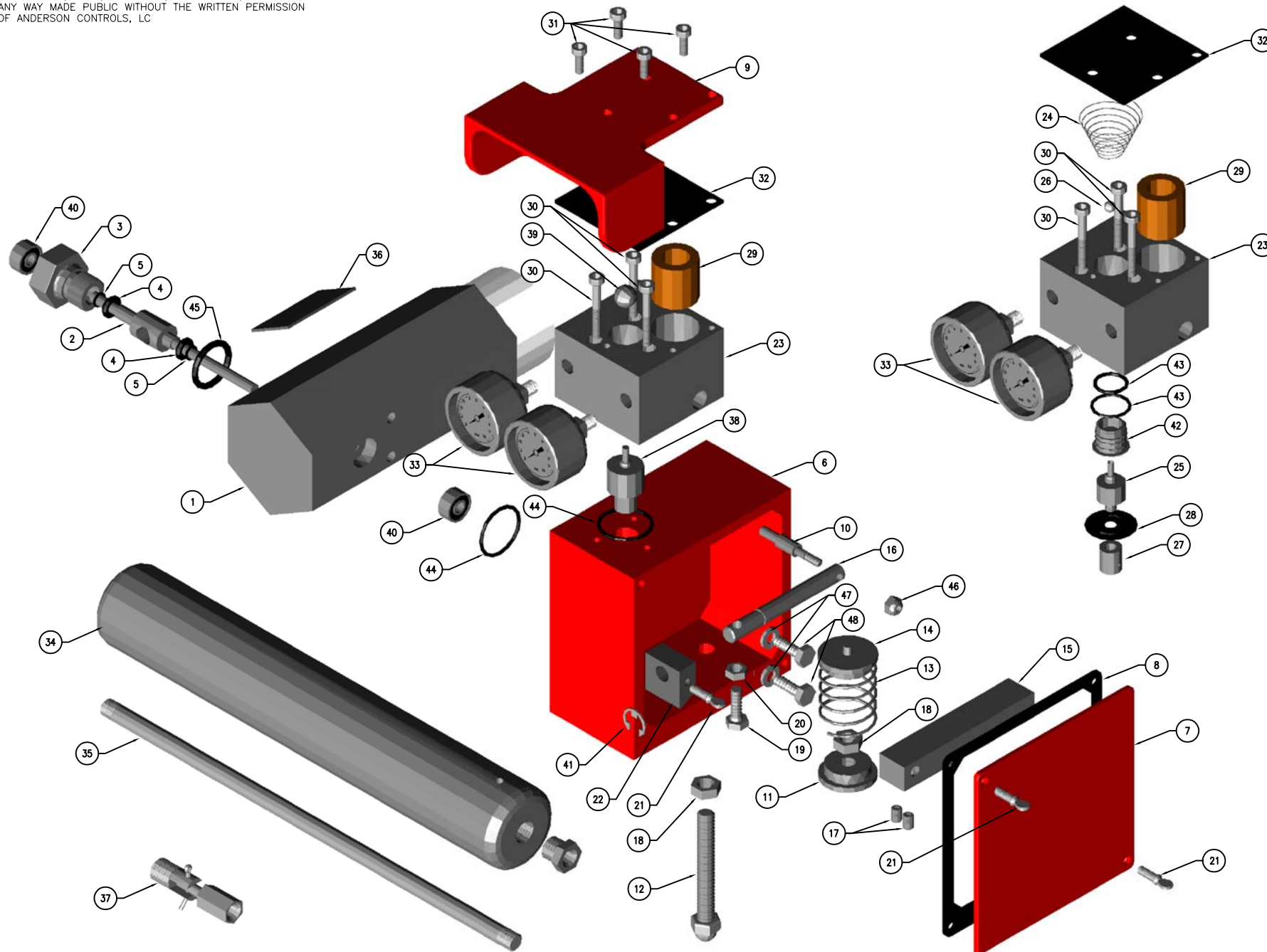


PROPRIETARY NOTE:
 THIS DOCUMENT IS THE PROPERTY OF ANDERSON CONTROLS, LC
 ALL INFORMATION CONTAINED HEREIN MAY NEITHER BE
 REPRODUCED, USED, DISCLOSED, TRANSMITTED, NOR IN
 ANY WAY MADE PUBLIC WITHOUT THE WRITTEN PERMISSION
 OF ANDERSON CONTROLS, LC



BILL OF MATERIALS				
ITEM	QTY	DESCRIPTION	PART NO.	SHEET
1	1	NOZZLE	2110	--
2	1	AXLE	2111	--
3	1	BRG. BLOCK w/BRG	4112	--
4	2	"O" RING 1/4	4115	--
5	2	1/4" SPIRAL BACKUP RING	4116	--
6	1	CASE	2334	--
7	1	CASE SIDE PLATE	2210	--
8	1	CASE COVER GASKET	2335	--
9	1	PILOT TOP	2331	--
10	1	PIVOT PIN	2316	--
11	1	ADJ. SCREW BASE	2318-1	--
12	1	ADJ. SCREW	2318-2	--
13	1	SPRING	4325	--
14	1	SPRING HOLDER	4324	--
15	1	TORQUE ARM	2312	--
16	1	PIVOT ARM	2315	--
17	2	SET SCREW	4314	--
18	2	LOCK NUT	4328	--
19	1	1/4"-28 x3/4" SCREW	2314	--
20	1	1/4"-28 NUT	2313	--
21	3	10-32 x 3/8" THB SCREW	2338	--
22	1	PULL BAR	2317	--
23	1	PILOT BASE	2010	--
24	1	CONICAL SPRING	2015	--
25	1	THROTTLE PILOT PIN	2011	--
26	1	1/4" SS BALL	4013	--
27	1	TH. PILOT PIN NUT	4020	--
28	1	DIAPHRAGM	4019	--
29	1	FILTER	4330	--
30	3	10-32 x 1-3/4" SCREW	2336	--
31	4	10-32 x 1/2" SCREW	2332	--
32	1	PILOT GASKET	2012	--
33	2	GAUGE (LIQUID FILLED)	4329	--
34	1	DISPLACER w/BUSHING	4617	--
35	1	DISPLACER ROD	4512	--
36	1	NAMEPLATE	2112	--
37	1	KNUCKLE JOINT ASSB	4700	--
38	1	SNAP PIN	4026	--
39	1	SNAP BALL	2014	--
40	2	BEARING (PRESS FIT INTO NOZZLE & BRG. BLOCK)	--	--
41	1	3/8" "E" CLIP	2341	--
42	1	SS REMOVABLE SEAT	2007	--
43	2	1/2"x3/8" O-RING	2006	--
44	2	1" O-RING	2345	--
45	1	3/4"x.139" O-RING	4114	--
46	1	10-32 NYLON INSERT LOCK NUT	2320	--
47	2	1/4" SPRING LOCK WASHER	2342	--
48	2	1/4-20 x 3/4" SCREW	2311	--

AC ANDERSON CONTROLS, LC
 8051 SEYMOUR HWY.
 WICHITA FALLS, TX. 76310
 940/691-4404

TOLERANCES
 UNLESS OTHERWISE SPECIFIED
 ANGLES=±1°
 FRACTIONS=±1/8"
 0.X=±.03
 0.XX=±.015
 0.XXX=±.005

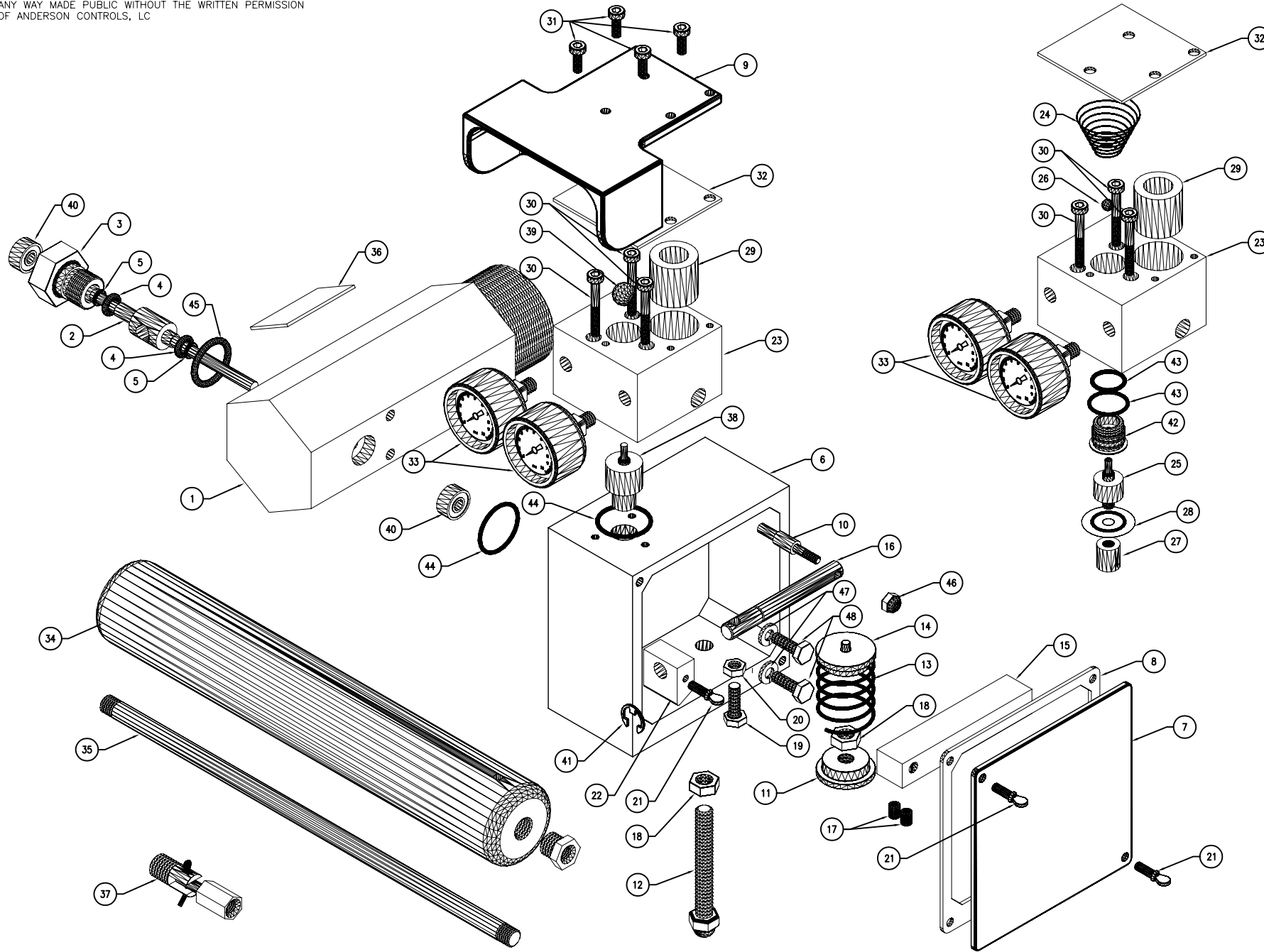
PNEUMATIC LIQUID LEVEL CONTROLLER

2202-JR THROTTLE CONTROLLER

ASSEMBLY

DRAWING NO.:	SCALE:	PAGE:	REV
SKTY092107	AS NOTED	1 OF 1	A

PROPRIETARY NOTE:
 THIS DOCUMENT IS THE PROPERTY OF ANDERSON CONTROLS, LC
 ALL INFORMATION CONTAINED HEREIN MAY NEITHER BE
 REPRODUCED, USED, DISCLOSED, TRANSMITTED, NOR IN
 ANY WAY MADE PUBLIC WITHOUT THE WRITTEN PERMISSION
 OF ANDERSON CONTROLS, LC



BILL OF MATERIALS				
ITEM	QTY	DESCRIPTION	PART NO.	SHEET
1	1	NOZZLE	2110	--
2	1	AXLE	2111	--
3	1	BRG. BLOCK w/BRG	4112	--
4	2	"O" RING 1/4	4115	--
5	2	1/4" SPIRAL BACKUP RING	4116	--
6	1	CASE	2334	--
7	1	CASE SIDE PLATE	2210	--
8	1	CASE COVER GASKET	2335	--
9	1	PILOT TOP	2331	--
10	1	PIVOT PIN	2316	--
11	1	ADJ. SCREW BASE	2318-1	--
12	1	ADJ. SCREW	2318-2	--
13	1	SPRING	4325	--
14	1	SPRING HOLDER	4324	--
15	1	TORQUE ARM	2312	--
16	1	PIVOT ARM	2315	--
17	2	SET SCREW	4314	--
18	2	LOCK NUT	4328	--
19	1	1/4"-28 x3/4" SCREW	2314	--
20	1	1/4"-28 NUT	2313	--
21	3	10-32 x 3/8" THB SCREW	2338	--
22	1	PULL BAR	2317	--
23	1	PILOT BASE	2010	--
24	1	CONICAL SPRING	2015	--
25	1	THROTTLE PILOT PIN	2011	--
26	1	1/4" SS BALL	4013	--
27	1	TH. PILOT PIN NUT	4020	--
28	1	DIAPHRAGM	4019	--
29	1	FILTER	4330	--
30	3	10-32 x 1-3/4" SCREW	2336	--
31	4	10-32 x 1/2" SCREW	2332	--
32	1	PILOT GASKET	2012	--
33	2	GAUGE (LIQUID FILLED)	4329	--
34	1	DISPLACER w/BUSHING	4617	--
35	1	DISPLACER ROD	4512	--
36	1	NAMEPLATE	2112	--
37	1	KNUCKLE JOINT ASSB	4700	--
38	1	SNAP PIN	4026	--
39	1	SNAP BALL	2014	--
40	2	BEARING (PRESS FIT INTO NOZZLE & BRG. BLOCK)	--	--
41	1	3/8" "E" CLIP	2341	--
42	1	SS REMOVABLE SEAT	2007	--
43	2	1/2"x3/8" O-RING	2006	--
44	2	1" O-RING	2345	--
45	1	3/4"x.139" O-RING	4114	--
46	1	10-32 NYLON INSERT LOCK NUT	2320	--
47	2	1/4" SPRING LOCK WASHER	2342	--
48	2	1/4-20 x 3/4" SCREW	2311	--

AC ANDERSON CONTROLS, LC
 8051 SEYMOUR HWY.
 WICHITA FALLS, TX. 76310
 940/691-4404

TOLERANCES
 UNLESS OTHERWISE SPECIFIED
 ANGLES=±1°
 FRACTIONS=±1/8"
 0.X=±.05
 0.XX=±.015
 0.XXX=±.005

PNEUMATIC LIQUID LEVEL CONTROLLER
 2202-JR THROTTLE CONTROLLER
 ASSEMBLY

DRAWING NO.: SKTY092107 SCALE: AS NOTED PAGE: 1 OF 1 REV: A